

Usage Statistics of Electronic Resources: A Comparison of Vendor Supplied Usage Data

Dr. Kanu A. Nagra

Electronic Resources Librarian & Assistant Professor
Borough of Manhattan Community College
The City University of New York (CUNY)
2014 ARL Library Assessment Conference
University of Washington, Seattle
August 4-6, 2014



What I will Cover Today

1. Nature and type of usage statistics reports and data available from database vendors
2. Project goal, scope and methodology
3. Data type and features of usage statistics reports
4. Usage statistics consultation source for effective practical assessment
5. Significance of this source and future plans



Research Grant Project

The project was sponsored by PSC–CUNY
Research Grant from Research Foundation of
the City University of New York

Usage Statistics for E-resources

➤ Sources of usage data for e-resources

- Database vendor supplied usage data reports
- Web server statistics
- Google analytics
- More

This project focuses on: Database vendor supplied usage data reports

Challenges in Vendor Supplied Usage Statistics

- Inconsistent data
- Partial or incomplete data
- Variations in usage statistics from vendor to vendor



Significant planning effort is required to make statistics usable for evaluation and assessment

Goal of this Project

To build a usage statistics consultation source for librarians and professionals interested in planning, evaluating and collecting usage statistics using their preferred criteria for data from vendor supplied usage reports for effective assessment.

Scope and Methodology

- In-depth analysis of electronic resource's vendor supplied usage data reports.
- Comparison of more than 150 databases subscribed by BMCC - CUNY
- Important parameters being considered: Data types & definitions, data for access platforms, features, availability of usage reports in local, national and international standards, sufficiency of data and the extent of data mining



Types of Vendor Supplied Reports

Overwhelming Data

- COUNTER Reports
- ICOLC Reports
- SUSHI Reports
- Standard Reports
- More



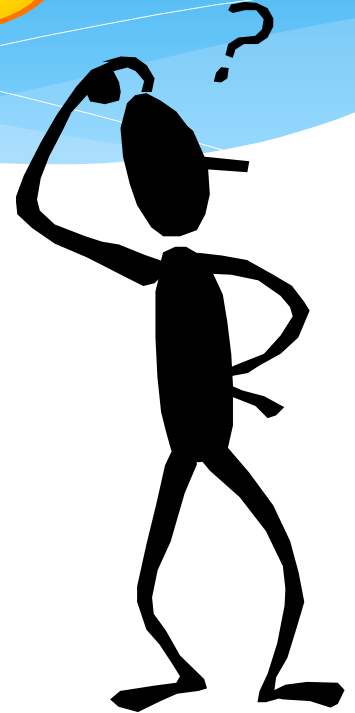
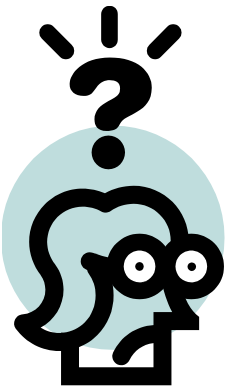
Data Types and Categories in Vendor Supplied Usage Reports

Full text retrieval,
Session length, Retrieval,
Read speaker/Listen Browse,
Number of successful fulltext,
Unique article request, Queries, Activities,
Site visits, Logins,
Smart link to, Unique users,
Page views, Total views, Custom link, Hits,
IP usage, Sessions, Image/Video, Item requests,
Searches, Playback, Total IP,
Peak SU, Section requests
Total usage,
Total Access, All TOC, Created,
Duration,
Full content unit reached/request,
Profile, Current issue TOC,
Journal usage, Title level search,

Data Definitions



What is what ?



Features of Vendor Supplied Usage Reports

➤ **Formats**

- PDF
- HTML
- CSV
- Excel
- Text
- more

➤ **Availability**

- Schedule a report
- Generate a report
- Display on screen

➤ **Date Range**

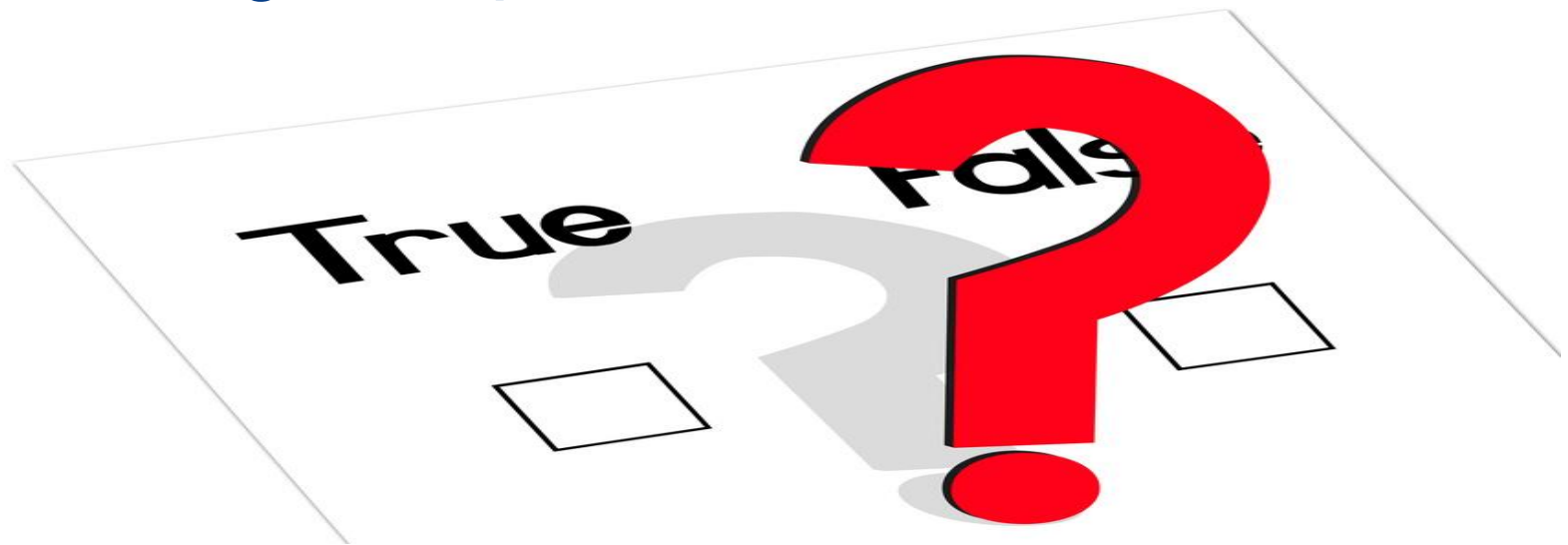
- Calendar year
- Custom range



Vendor Supplied Usage Data for Access Platforms

Does vendor provide usage data for ADA compliant access?

Does vendor provide usage data for emerging technology access platforms and devices?



Usage Statistics Consultation Source for Practical Assessment

- Detailed analysis and comparison of different reports, data categories, definitions and features to aid in effective assessment of library's electronic resources
- It will be available on CUNY Academic Commons



Designed to support faculty initiatives and build
community



Significance

Benefits for Libraries

- Libraries can evaluate or reevaluate categories in which they require data to support and conduct effective assessments of e-resources
- Request desired data categories from database vendors

Benefits for Vendors

- Helpful tool for vendors to plan ahead for providing usage data in categories' that libraries need for their resource assessments

Future Plan to Sustain this Source

Usage consultation source will continue to be updated after the completion of this project depending on availability of resources and future access to electronic resources available at BMCC





Thank you !

Dr. Kanu A. Nagra

Borough of Manhattan Community College

The City University of New York

knagra@bmcc.cuny.edu

