

A Model for Assessing Interdisciplinary Collections

Allison Sivak

Library Assessment Conference

Baltimore, Md

October 27, 2010

The Problem

- Increasing interdisciplinarity in scholarship
- Little research on methods of collection assessment across disciplines
 - What exists: analog methods

The UAL Example

- Environmental Studies
- Needs
 - Easy replication
 - Collection-centred assessment (Nat. Lib. Australia, 2004)
- Challenges
 - No dedicated department, no single liaison librarian
 - Monos vs. serials

Methods

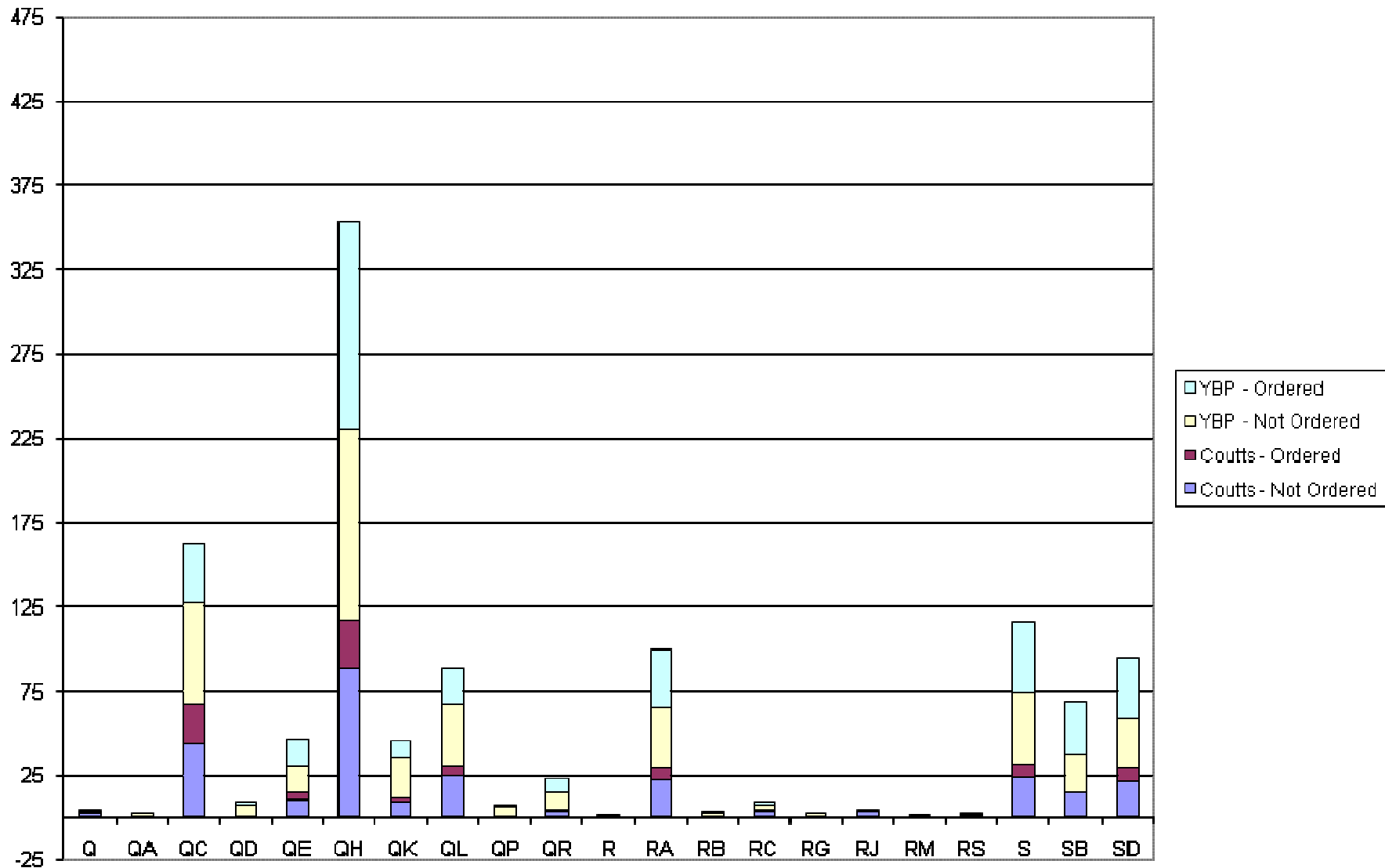
- Understanding collection “picture”
 - i.e., no peer comparison
- Impact factor journals
- Vendor reports by interdisciplinary subject

Tools

Tool	Scope	Benefits	Drawbacks
OCLC Collections Analysis	Current and historic	<ul style="list-style-type: none"> •Big picture <u>of us and peers</u> •Simple, fast •Future interd. reports? 	<ul style="list-style-type: none"> •Laborious, inflexible interd. category creation
Director's Station	Current and historic	<ul style="list-style-type: none"> •Big picture of <u>what we have</u> •Simple, fast •Good data visualization •More flexible categories 	<ul style="list-style-type: none"> •Laborious interd category creation
Vendor reports (YBP, Coutts)	Current	<ul style="list-style-type: none"> •Big picture of <u>publishing</u> •Simple, fast •Good data visualization •Established interd. Categories 	<ul style="list-style-type: none"> •Limited to monos •No historic measure •Limited to vendor's stock

Data

2008 Monographs Purchased and Not Purchased by Major Vendor
*note: includes 1,000 YBP eBooks



Conclusions

- Fastish and easyish
 - Choose frequency and subjects wisely
- Suitable for interdisciplinary areas where collection currency is key
- Remaining questions
 - Are liaisons thinking ES when they select?
 - How best to share awareness of ES resources?
 - How to deal with those e-books?
 - What if vendor hasn't created your inter.d category?
 - e.g., Circumpolar collection

Allison Sivak
Assessment Librarian
University of Alberta Libraries
allison.sivak@ualberta.ca